

TOP 7

Things You Can Do With LMS Data

The ability to monitor and act upon the data drawn from a Learning Management System (LMS) provides a higher education institution with a number of key advantages.

Here is list of what we consider to be the “top 7.”

1



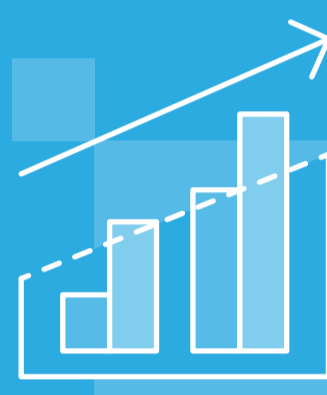
IDENTIFY AT-RISK STUDENTS EARLY

Faculty and advisors can identify struggling students to intervene quickly and provide course correction before it's too late.

2

MEASURE AND IMPROVE ADOPTION RATES

Identify which courses are configured in the learning environment and which are not. Establish best practices for system-wide or departmental tool configurations.



3



MONITOR AND ACT UPON STUDENT PROGRESS

Lagging students can be sent additional resource material. Accelerated students can be provided more challenging content.

4

AUTOMATE OUTREACH

Use automated messaging to send emails based on any number of criteria. Send links to resources, personal encouragement, or congratulations.



5



TRACK INSTITUTIONAL GOALS

Make the case for institutional success and turn data-driven insights into impactful action to help improve business outcomes and bottom line. Also track program level outcome achievements for accreditation reporting.

6

IMPROVE STUDENT RETENTION

Help maintain high levels of engagement with students to ensure greater probabilities of program completion.



7



EMPOWER STUDENTS

Provide students with progress reports and the ability to have a top level view of their studies to ensure they're on the right track.

“With data drawn from Brightspace, we can intervene with an at-risk student even before they're aware they're at risk.”

Matthew Thornton

Associate Vice President, Student Technology Experience
Southern New Hampshire University